

Setup Guide

Label Peeler Module (PA-LP-006)

TJ-4420TN/4520TN/4620TN

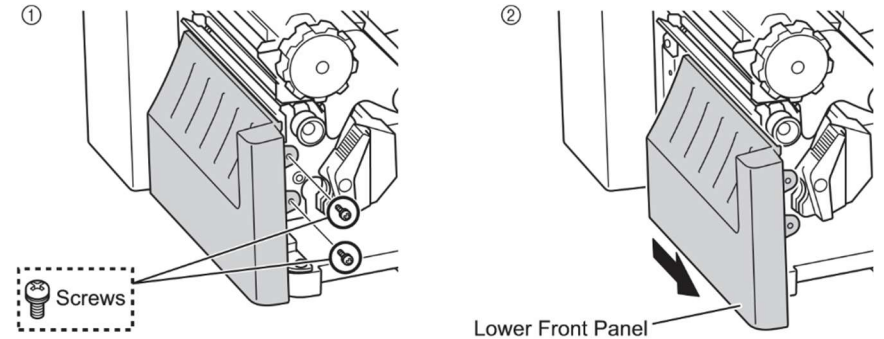
NOTE

- Only Authorized Brother Dealers or Certified Technicians should perform this optional installation.
- For more information about installation and use, contact your local Brother office.
- Disconnect the printer's AC Power Cord from the AC power outlet (electrical socket) before installing or removing the Label Peeler to avoid the risk of electrical shock.
- When installing the Label Peeler, do not twist, severely bend, pinch, or bind any cords. This may cause damage or malfunction.
- After installation or removal, DO NOT leave tools or hardware inside the label printer, otherwise an electrical shock may occur, or the machine may get damaged or destroyed by static electricity.
- DO NOT touch the printer parts with your bare hands as these parts may get damaged or destroyed by static electricity. Before touching the printer parts, place the printer on an Electrostatic Discharge (ESD) grounding mat or use anti-static gloves.
- Make sure not to lose the screws or other small parts during installation.
- DO NOT place the machine on an unstable surface, such as a table or shelf. If the machine falls, injuries may occur.

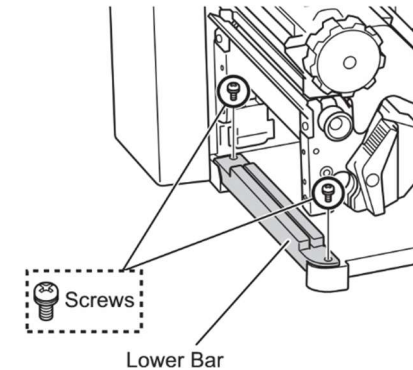
For the specific Label Printer part names, see section 2.2 Printer Overview in your label printer's User's Guide.

A. Install the Label Peeler Module

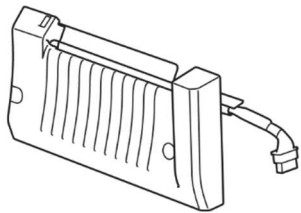
1. Open the Media Cover.
2. Remove the two Screws and pull out the Lower Front Panel.



3. Remove the two Screws and then remove the Lower Bar.



Label Peeler Module



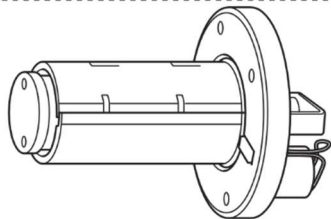
Roller Module



Media Guide Bar and Rear Label Guide



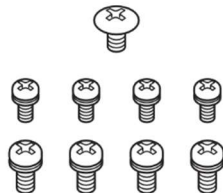
Internal Liner Rewinder Module



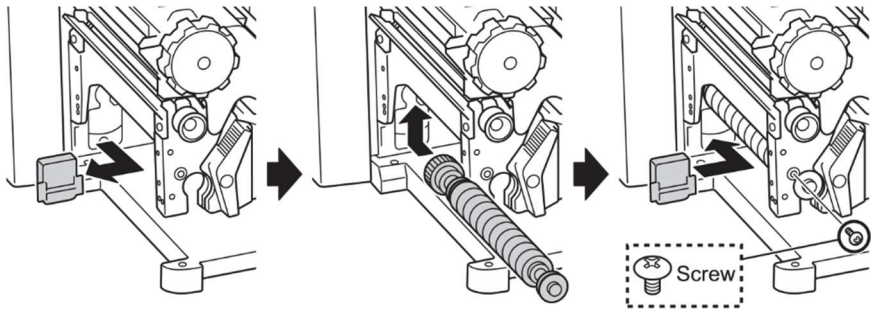
Two Fixing Bolts



Nine Screws



4. Remove the Black Cap. Install the Roller Module in the slot, and fix the Screw as illustrated (fastened by  $0.74 \text{ N} \cdot \text{m} \pm 0.10 \text{ N} \cdot \text{m}$ ), and then insert the Black Cap back into the slot.



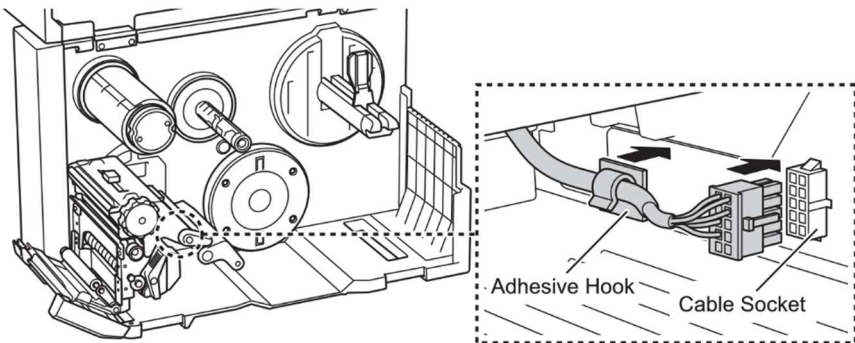
**NOTE**

**You must tighten the Screw to prevent the Roller Module from dislodging when the Label Peeler is in use.**

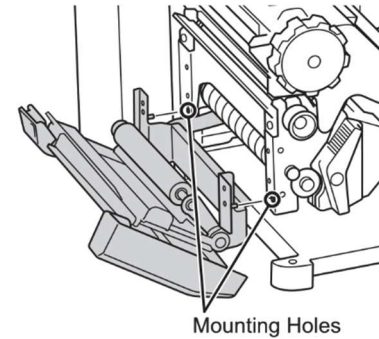
5. Make sure the AC Power Cord is disconnected from the AC power outlet (electrical socket), and then plug the Label Peeler Module Cable into the Cable Socket.

**NOTE**

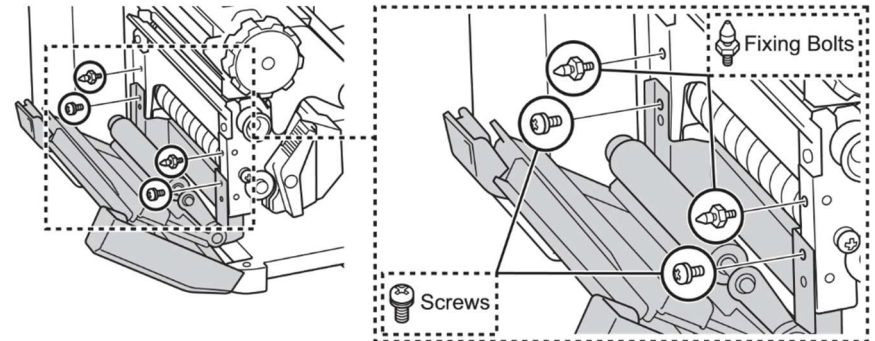
- Secure the cable by affixing the Adhesive Hook onto the PCB side.
- **DO NOT** force the cable into the socket.
- Make sure you align the Label Peeler Module Cable's Connector with the Cable Socket before plugging the Label Peeler Module Cable, as illustrated.



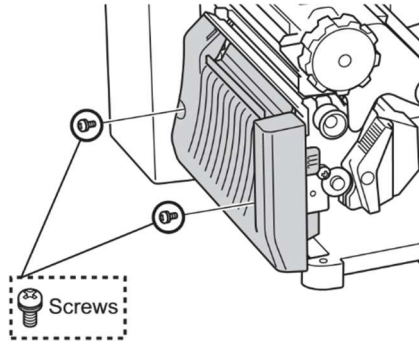
6. Mount the Peeler Module by inserting both bolts into the Mounting Holes, as illustrated.



7. Fasten the two Fixing Bolts and two Screws to secure the Label Peeler Module, and then close the module's Front Cover (fastened by  $0.74 \text{ N} \cdot \text{m} \pm 0.10 \text{ N} \cdot \text{m}$ ).

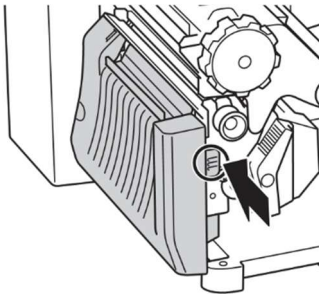


8. Fasten the remaining two Screws on the module's Front Cover as illustrated (fastened by  $0.74 \text{ N} \cdot \text{m} \pm 0.10 \text{ N} \cdot \text{m}$ ).



**NOTE**

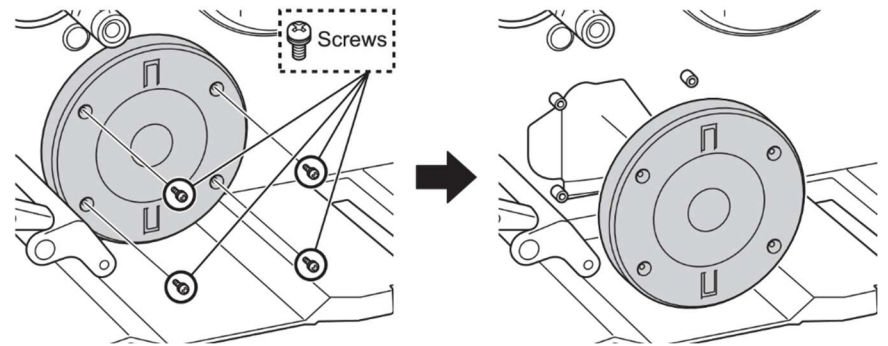
To open the module's Front Cover, press the button on the side, as illustrated.



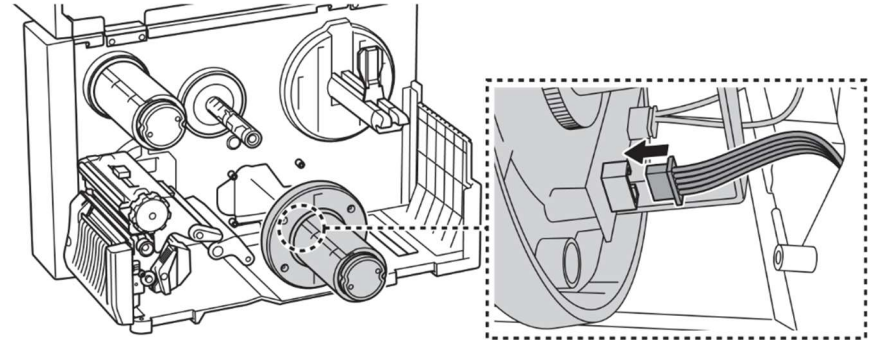
Next, go to section B to install the Internal Liner Rewinder Module.

**B. Install the Internal Liner Rewinder Module**

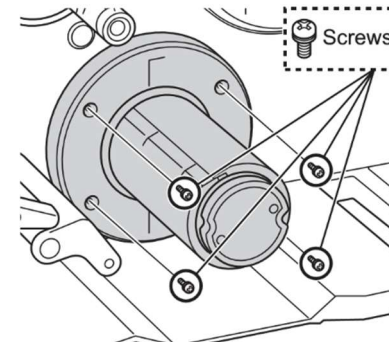
1. Remove the four Screws as illustrated, and then remove the Rewind Spindle Cover.



2. Thread the Power Cable from the PCB side and connect it to the Internal Liner Rewinder Module's power connector.



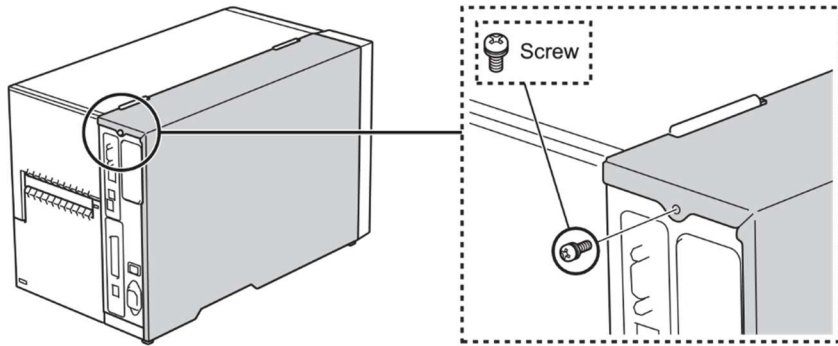
3. Use the four Screws supplied with the Internal Liner Rewinder Module to secure it. (fastened by  $1.03 \text{ N} \cdot \text{m} \pm 0.15 \text{ N} \cdot \text{m}$ )



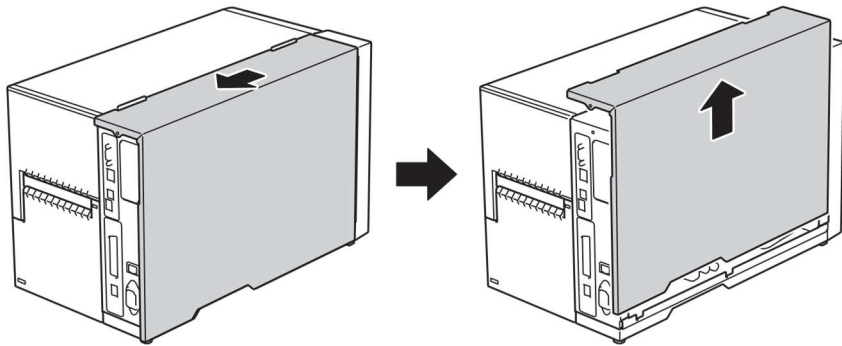
Next, go to section C to install the Media Guide Bar and Rear Label Guide Module.

### C. Install the Media Guide Bar and Rear Label Module

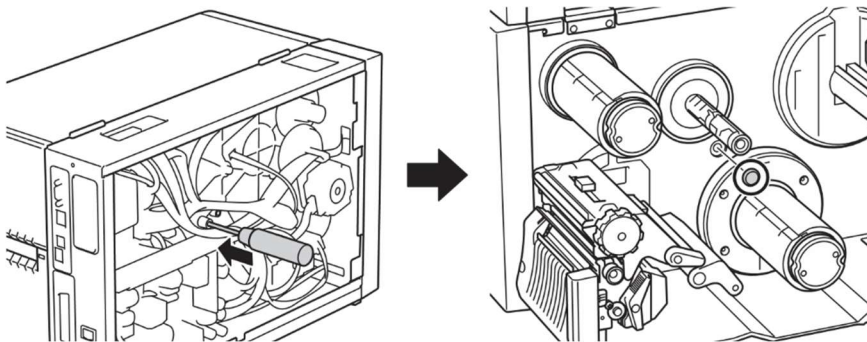
1. Remove the Screw on the back of the PCB Cover.



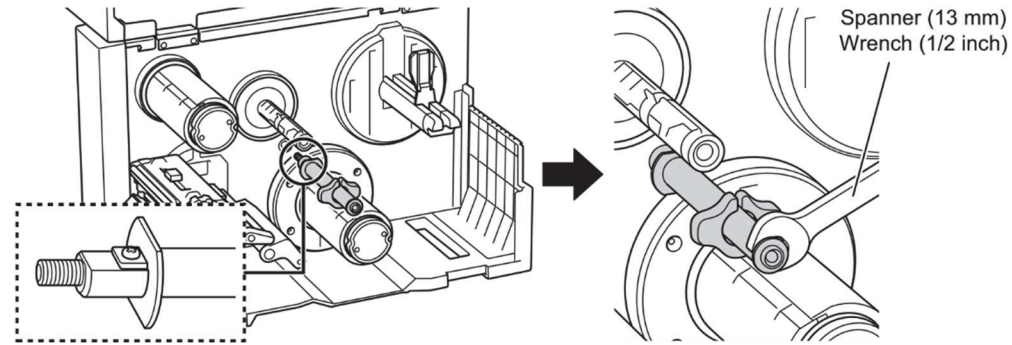
2. Remove the PCB Cover by pushing it toward the back of the printer, and then lifting it with both hands.



3. Use a screwdriver to push the black rubber cap out of the opening in the PCB side as illustrated.



4. Install the Media Guide Bar and Rear Label Guide Module and use a 13 mm spanner or a 1/2 inch wrench to fasten it.



5. Reattach the PCB Cover (fastened by  $0.49 \text{ N} \cdot \text{m} \pm 0.07 \text{ N} \cdot \text{m}$ ).

6. Complete the installation of the Media Guide Bar and Rear Label Guide Module by loading the print media.

For more information about loading the media after installing the Label Peeler Module, see sections 3.2 *Load the Ribbon* and 3.4.3 *Load Media in Peeler Mode (Optional)* in your label printer's *User's Guide*.